

EPEC

Doric Products is a leading manufacturer of key locking door hardware. Based in Australia, using modern high quality equipment they are renowned for their innovative design approach to product for the aluminium fabricator industry in Australia and New Zealand.

EPEC ELECTRONIC PIN EURO CYLINDER

The Electronic PIN Euro Cylinder (EPEC) will help provide your door with a smarter lock. The EPEC replaces traditional fixed or floating cam keylock Euro cylinder with a digital-key & turn operation; while retaining the existing lock body and handle.

While most digital-key entry locks are only a single handle body lock option, EPEC is designed to fit the existing euro cylinder profile and provide a greater choice of designs in handle furniture and lock bodies.

The EPEC allows you to create and manage up to two groups and 12 unique PIN codes; you'll never have to worry about losing a key again.

FEATURES

Keyless Entry

Enter a 6 digit PIN Code which acts as a digital key and rotate to unlock/lock.

Lock Cylinder Upgrade Kit

Designed to quickly and easily upgrade any existing Euro Cylinder lockbody. Can replace either fixed and floating cam locks.

Multi-Orientated

PIN pad always positions #1 as the top left PIN location.

Multi-Group Access Control

Provides complete access control allowing up to 2 groups, 12 unique user codes, and limited temporary codes for trades and visitors.

Tough and Secure

Stainless Steel 316 Actuators and Anti Drill Plate for tamper protection. Highest security standards against software attack.

Long Battery Life

Up to 3 years and 9,000 operations. Easy to change CR2 battery and low battery warning with Micro USB connection for backup power.

Weatherproof

IP55 rated against rain, hail, snow and dust.

Deadlocking and Snib Mode

Deadlocking level security. Programmable internal snib operation via keypad.

TESTING

- Cycle Testing
- Battery Life Cycle Testing
- Ingress Protection Testing (IP55)
- Penetration Testing
- Salt Bath Testing
- Ultimate Testing
- Software Testing



MODEL DETAILS

Product Code	Data	Finish	Packaging	Pack	Outer
BL-MDEPE62SC	62mm length	Silver	Display Box	1	6
BL-MDEPE62BLK	62mm length	Black	Display Box	1	6
BL-MDEPE70SC	70mm length	Silver	Display Box	1	6
BL-MDEPE70BLK	70mm length	Black	Display Box	1	6



SATIN CHROME

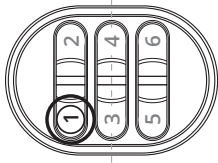
SATIN BLACK

QUICK START GUIDE: HOW TO USE

1 Keypad/Actuator Orientation

Top left key is always #1, no matter which way the actuator has been spun.

The Electronic Cylinder keypads use an orientation sensor to determine which way is up.



2 Operating/using the Cylinder

By default the cylinder will be in secure mode and the actuators will spin freely without operating the door's lockbody.

Rotate the actuator to a vertical position. Enter the 6 digit PIN to activate the cylinder. The keypad will flash green if the correct code is entered.

Rotate the actuator to operate the lockbody. Confirm the door can now lock/unlock.

Pushing any button will put the cylinder back into secure mode. Test this by rotating the actuator to ensure it spins freely without operating the lockbody.

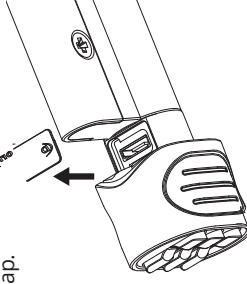
The cylinder will automatically enter secure mode after 10 seconds.

3 When does the battery need replacing?

The keypad will flash orange after a correct PIN is entered when it's time to replace the battery.

If the battery goes completely flat you can temporarily power the cylinder using any power bank with a Micro USB connection (not included).

The connector is located under the Dortic logo cap.



4 Replacing the battery

1. While the door is open, locate the keypad that protrudes further.

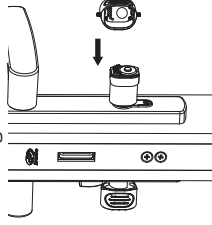
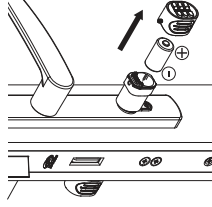
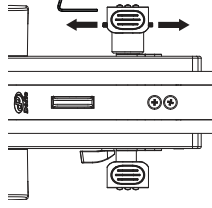
Loosen the 2 x grub screws with 3 turns using the supplied allen key.

2. Slide the keypad off in a direction away from the door.

Replace 1 x CR2 battery and check to ensure the positive battery terminal is visible after insertion.

3. Replace keypad aligning the pins and battery terminal. If the keypad is not inserting easily than double check the orientation is correct.

Keep pressure on the keypad while fastening the 2 x grub screws, ensuring not to over tighten the grub screws.



The cylinder uses one CR2 battery

5 Understanding PINs, User IDs and Groups

PINs:

All PIN's are a six digit long code. You can use the same digit/key multiple times in your code.

Groups:

There are a total of two groups, each with 6 spots/Users available. A combined Group-User number makes the User ID. Example, User ID 1 2, refers to User 2 in Group 1.

Groups can be used to manage multiple types of Users, such as family or tradesmen.

User ID:

To add a new PIN code, an available User ID must be assigned. *Read Programming Instructions.*

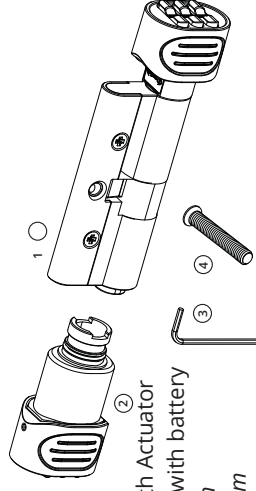
Using the table to the right can help keep track of the Users. Remember to store in a secure location.

6 Builder handover & construction keying

At builder handover the user is required to change the master PIN, ensuring the PIN remains confidential to them only.

Changing the Master PIN will erase all other PINs programmed into the cylinder.

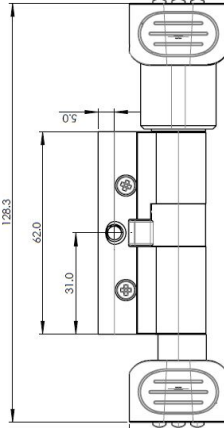
This will ensure no unwanted access by the builder or their trades.



- ① x1 Cylinder Body with Actuator
- ② x1 Second Actuator with battery
- ③ x1 Allen Key - 1.5mm
- ④ x1 Screw - M5 x 30mm

USER ID	Group 1	Group 2
User 1	User ID 1 1	User ID 2 1
User 2	User ID 1 2	User ID 2 2
User 3	User ID 1 3	User ID 2 3
User 4	User ID 1 4	User ID 2 4
User 5	User ID 1 5	User ID 2 5
User 6	User ID 1 6	User ID 2 6

62mm Cylinder



70mm Cylinder

